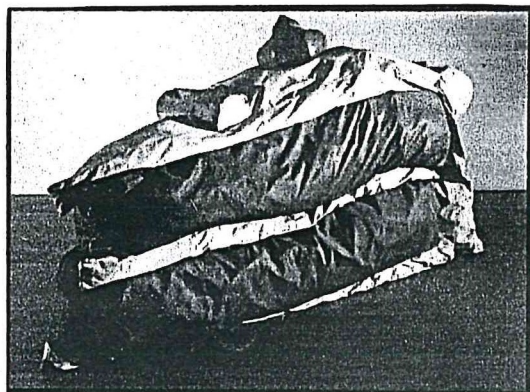




Create a Pop Art Sculpture of a Sweet



Date set: 12 Feb

Due Date:
12th March

Look at examples of sculpture by **Claes Oldenburg**. Find out what they are made of and how big they are. Look at where they are as well.

Make a sculpture of a sweet or sweets. Think carefully about the size of your sculpture, the materials you could use and any packaging. How will you use bold, strong colours?

Possible materials;

- papier mache
- card
- 'air-dry' clay
- wood
- stitched and stuffed fabric
- tissue paper and cellophane

and anything else you can think of!

Be inventive and make your sculpture colourful and fun.